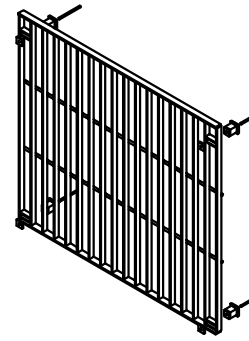
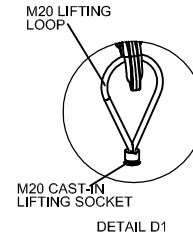
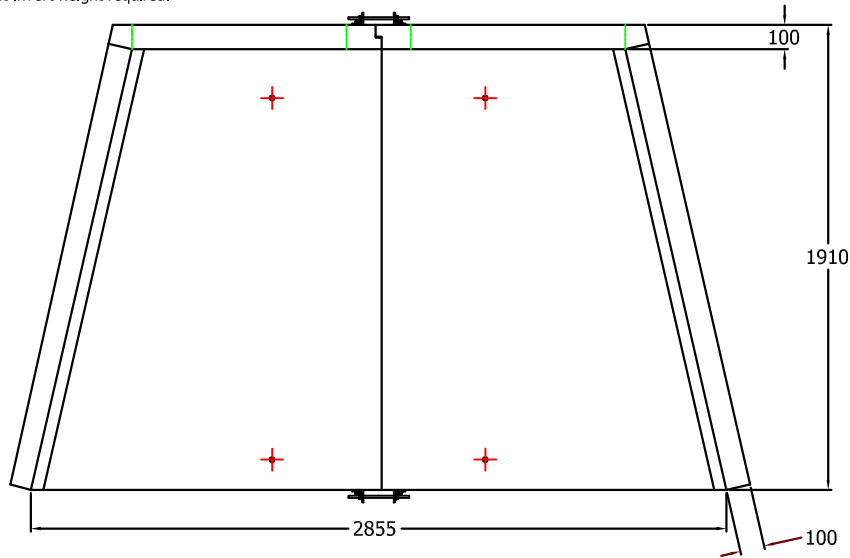
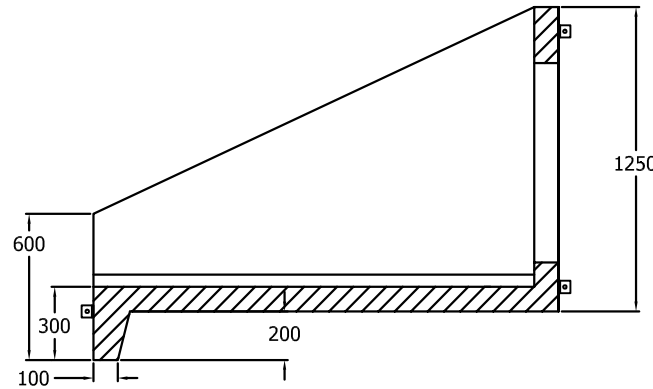
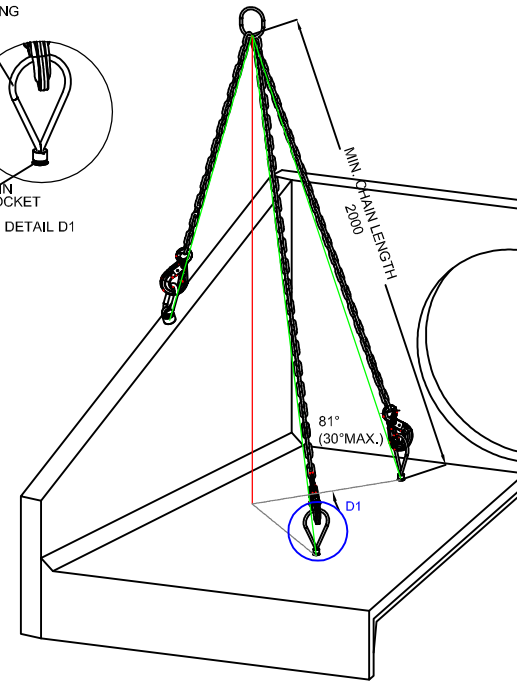
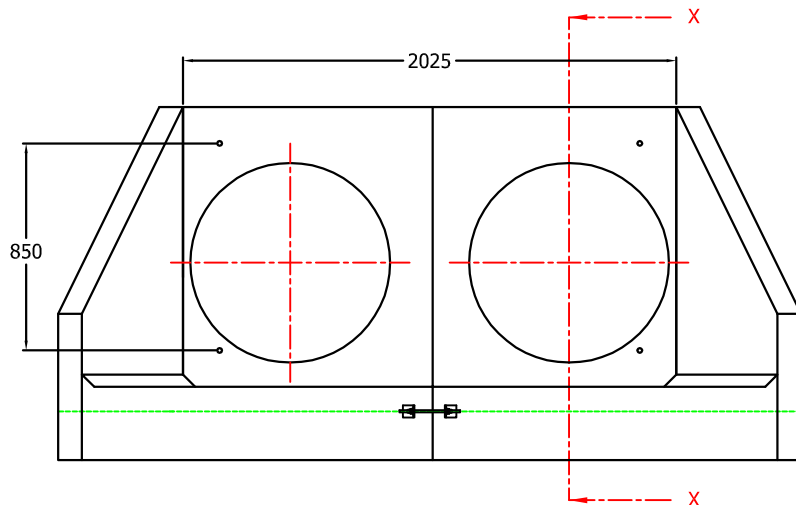


Opening in back wall cast to suit the outside diameter of the pipe at invert height required.



Grating manufactured from 40 x 10 flat at 110mm centres spaced 75mm away from the back wall. Fully Welded and hot dip galvanised.



**NOTES:**

- All dimensions in mm U.O.S
- All measurements  $\pm 1$ mm

**Specification Information**

- Opening in back wall cast to suit outside diameter of the pipework.
- Invert level of pipe can be set to your specification.

**Headwall Installation**

Units should be bedded on minimum 100mm thick well compacted Class 6A\* selected well graded granular material.  
 \*Manual of contract documents for Highway Works: Volume (MCHW1) specification for Highway Works, Series 600 (Nov.09).  
 Sit the headwall level or with a slight fall 1:50 from pipe to spill mouth.

**Handling**

- A. Weight of concrete is based on 2.4 tonne/m<sup>3</sup>+5% is recommended for string lifting equipment.
- B. All lifting points shall be used as specified below.
- C. Unit to be lifted as per lifting diagram.

**Concrete**

- A. Mix ref: Self-Compacting C40/50 M35
- B. Lifting strength based on 2 cubes = 20N/mm<sup>2</sup>
- C. Characteristic 28 day cube strength = 50N/mm<sup>2</sup>
- D. Concrete provides Design Chemical Class 4 (DC4) to special Digest 1, Table F2.

**Reinforcement**

- A. Reinforcement to BS EN 13369.
- B. Scheduling, dimensioning, bending & cutting to BS8666.
- C. Cage to be machine tied with steel wire.

**Manufacture**

- A. Manufacture to BS EN 15268:2008 precast concrete products - Retaining wall elements, Factory Production Control Certificate number: 0086-CPR-650448 & BS EN 13369.
- B. Tolerances to BS EN 13369 clause 4.3.1.1
- C. Finishing:

Class	Top	Sides	Base	Back of back wall
A	A	A	A	Self-Leveled

Marking: Units shall be indelibly marked to show:

- Mould Reference code.
- De-mould date.
- Job reference number & unique product number.
- Unit weight (kg)

**Design**

- A. Concrete design to EC2.
- B. JKH have designed the concrete units only, the site conditions should be assessed for suitability by the scheme designer.
- C. Units are designed to withstand a vertical live load surcharge of 10kN/M<sup>2</sup>.
- D. Weight of soil = 18kN/M<sup>2</sup>.
- E. Angle of internal friction = 30°
- F. Design Life: >50 years

Min Cover	Cover (mm)	Min Cover	Min Cover	Max Cover
All Faces	33	28	28	38

Exposure Classification	Exposure Induced by Chlorides	Exposure Induced by Chlorides	Restrictions	Overall
XC1	XC2	XC3	XC4	XC5

**Fabrication Specification**

- A. Manufacture IAW EN 1090-2 EXC CLASS 1
- B. Material grade is to be: BS EN 10025 S275
- C. Welding carried out IAW EN 1090-2 PARA 7.5.4 - 7.5.18
- D. All fillet and butt welds to have a minimum throat thickness of 6mm & joints to be fully welded where possible.
- E. Ensure vertical flats are fully welded both sides where possible.
- F. All sharp edges and burrs are to be removed.
- G. Remove all weld spatter.
- H. Holes by punching are permitted without reaming.
- I. Galvanising is carried out after fabrication to BS EN: ISO 1461.

**Handrail Specification**

- A. Kee Klamp Galvanised Size 8 Fittings.
- B. Size 8 48.3mm OD 3.2mm Wall Thickness Galvanised Medium Duty Tube to BS EN 10255.
- C. 360Nm Design Load as stated in BS 8118, BS 6180, BS 6399 & BS 7816, CMI Engineering Specification for the Water Industry (CESWI).
- D. Other design loads available on request
- E. GRP/FRP Handrails also available.

**JKH**

ADDRESS: JKH LIMITED  
 HAMPSTEAD AVENUE  
 MILDENHALL  
 IP28 7AS

TEL: 01638 713795  
 FAX: 01638 582507  
 EMAIL: info@jkh.co.uk  
 WEBSITE: www.jkh.co.uk

**PROPRIETARY & CONFIDENTIAL**

The information contained in this drawing is the sole property of JKH Drainage (UK) Limited.  
 Any reproduction in part or as a whole without the written permission of JKH Drainage (UK) Limited is strictly prohibited.

**DRAWING TITLE / PROJECT:**

**2000-1250 + close coupled grating**

CLIENT:	Client
SCALE:	NTS
DRAWING DATE:	07/06/2019
HEADWALL WEIGHT:	2750kg
GRATING WEIGHT:	140kg
TOTAL WEIGHT:	2890kg
DRAWN BY:	LC
CHECKED BY:	-
DRAWING No:	-

**2000-1250 Headwall**

DO NOT SCALE DRAWING

