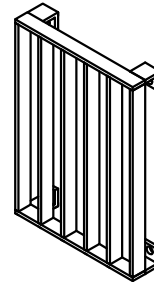
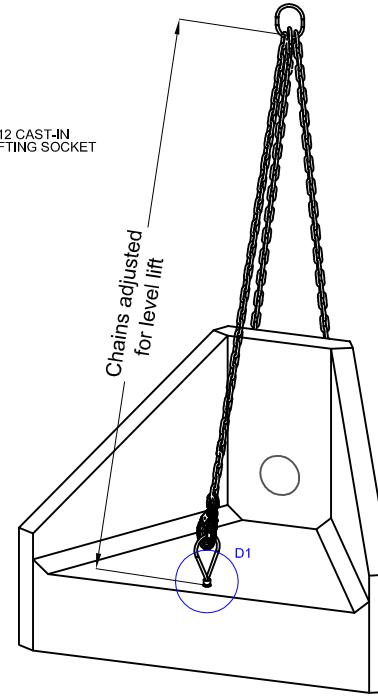
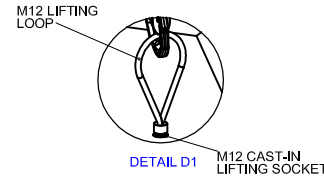
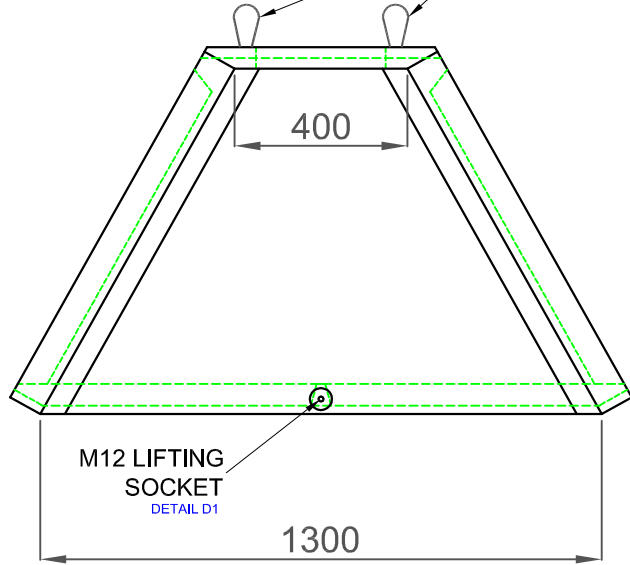
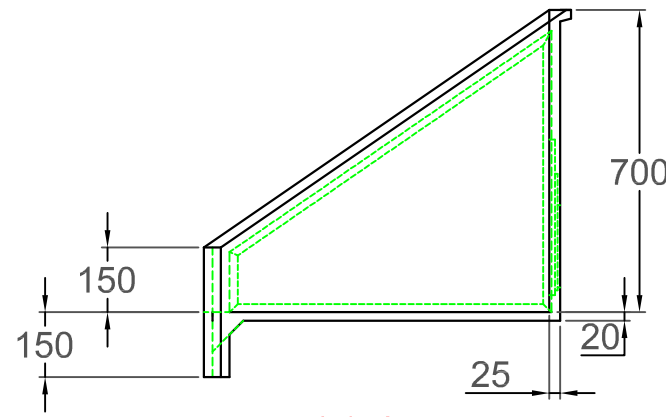
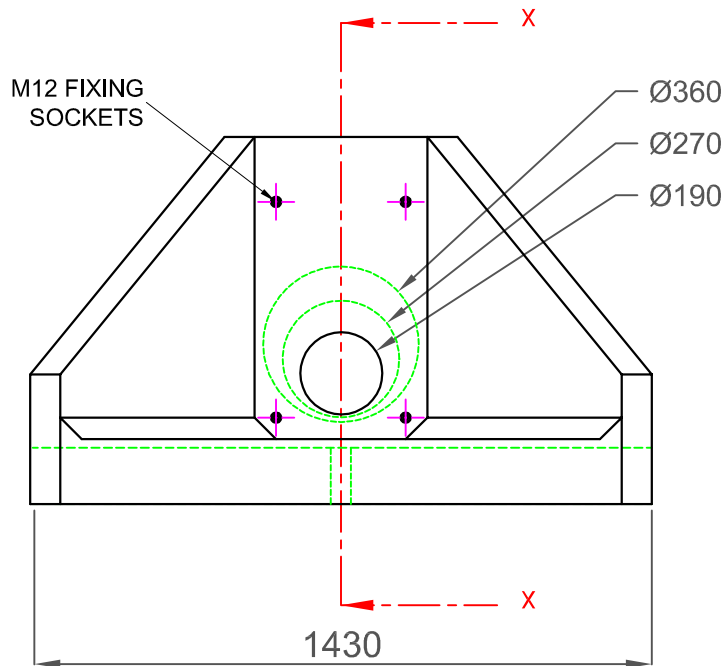


Opening in back wall cast to suit the outside diameter of the pipe at invert height required.

WIRE ROPE LIFTING LOOPS TO FORM 3 POINT LIFT WITH M12 LIFTING SOCKET



DETAIL D2



SECTION X-X

DO NOT SCALE DRAWING

**NOTES:**

- All dimensions in mm U.O.S
- All measurements ± 1mm

**Headwall Installation**

Units should be bedded on minimum 100mm thick well compacted Class 6A selected well graded granular material.  
 \*Manual of contract documents for Highway Works: Volume (MCH/W1) specification for Highway Works: Series 600 (Nov.09).  
 Sit the headwall level or with a slight fall 1:50 from pipe to spill mouth.

**Material**

- Characteristic compressive strength of Glass Reinforced Concrete = 60N/mm<sup>2</sup>
- Characteristic flexural strength of Glass Reinforced Concrete = 6N/mm<sup>2</sup>
- Free water: Cement ratio = <0.55
- Glass fibres = 63g/m<sup>3</sup>
- Specification: XA2, DS2, DC2

**Fabrication Specification**

- Manufacture IAW EN 1090-2 EXC CLASS 1
- Material grade is to be: BS EN 10029 S275
- Welding carried out IAW EN 1090-2 PARA 7.5.4 - 7.5.18
- All fillet and butt welds to have a minimum throat thickness of 6mm & joints to be fully welded where possible.
- Ensures vertical flats are fully welded both sides where possible.
- All sharp edges and burrs are to be removed.
- Remove all weld spatter.
- Holes by punching are permitted without reaming.
- Galvanising is carried out after fabrication to BS EN: ISO 1461.



ADDRESS: JKH LIMITED  
 HAMPSTEAD AVENUE  
 MILDENHALL  
 IP29 7AS  
 PROPRIETARY & CONFIDENTIAL

TEL: 01638 713796  
 FAX: 01638 582507  
 EMAIL: info@jkh.co.uk  
 WEBSITE: www.jkh.co.uk

The information contained in this drawing is the sole property of JKH Drainage Ltd. Any reproduction in part or as a whole without the written permission of JKH Drainage Ltd. is strictly prohibited.

DRAWING TITLE / PROJECT:

**GRC 300 Series Headwall**  
 (Glass Reinforced Cement)

CLIENT:	Client		
SCALE:	NTS	DRAWING DATE:	23/05/2019
HEADWALL WEIGHT:	150kg	GRATINGS WEIGHT:	17kg
TOTAL WEIGHT:	167kg		
DRAWN BY:	LC	CHECKED BY:	-
DRAWING NO:	GRC 300 SERIES		

